

Mid-Atlantic Logistics Center

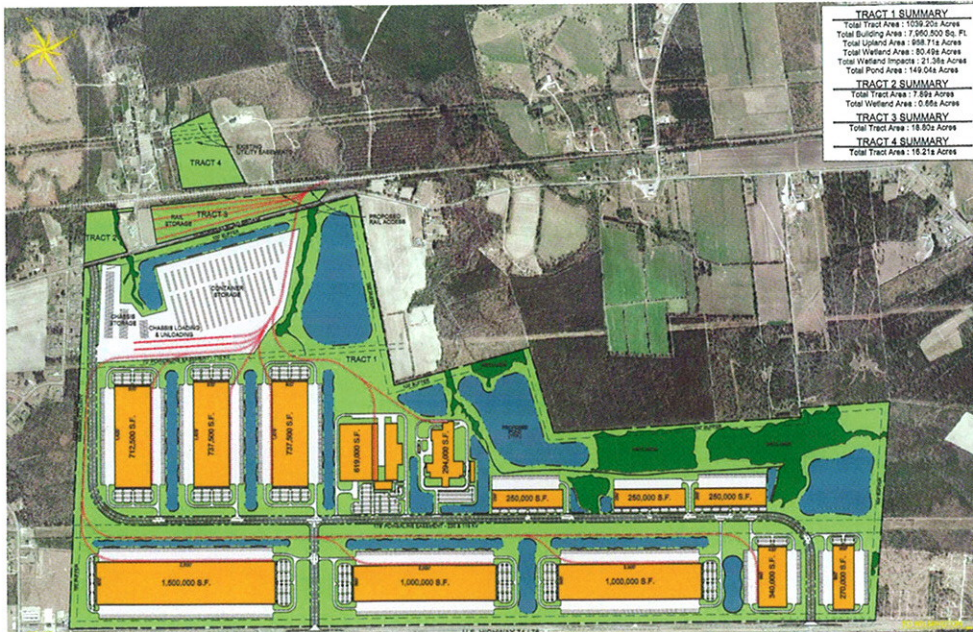
Business in all directions



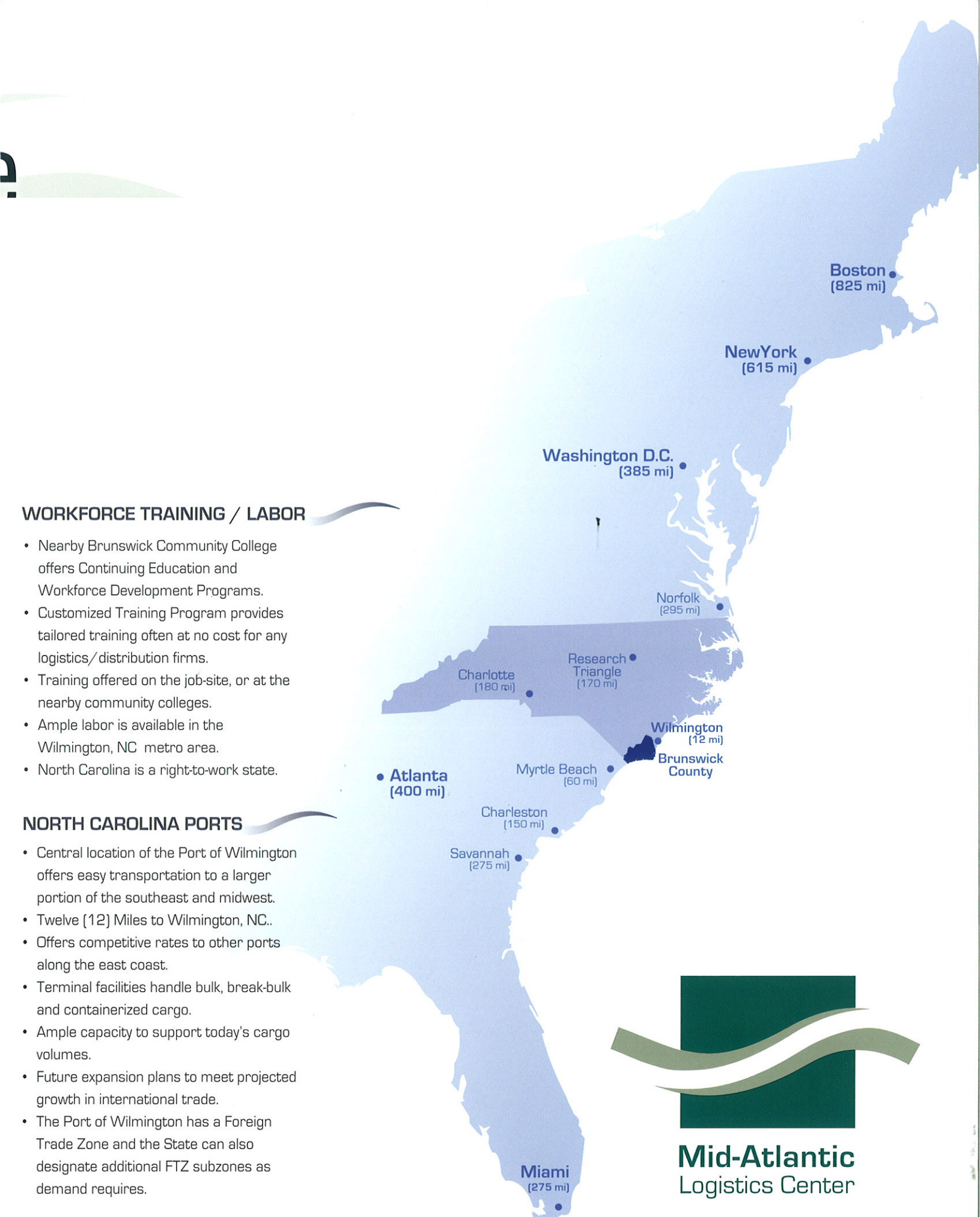
BRUNSWICK COUNTY'S NEWEST INTERMODAL PARK

The Mid-Atlantic Logistics Center is an industrial park located in an ideal location, on Highway 74/76 in Brunswick County which has one of the lowest tax rates in North Carolina. With close access to rail, major US highways and a state port just minutes away, the Mid-Atlantic Logistics Center is the perfect place for your distribution warehouse. There are over 1,000 acres available with water, sewer, natural gas and fiber on site. With opportunities for continuing education, workforce development programs and customized training programs, the Mid-Atlantic Logistics Center is a prime location. The ports in nearby Wilmington support today's cargo capacity and there are expansion plans in place that meet the projected growth in trade over the next few years.

PROPOSED MID-ATLANTIC LOGISTICS CENTER



- Over 1,000 Acres Available
- Zoned Industrial
- Water, Sewer, Natural Gas and Fiber on Site
- Located on US 74/76
- Close Proximity to NC Ports
- BCC Work Force Training Center Available
- CSX Rail Available

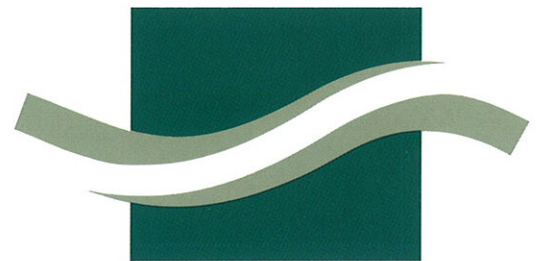


WORKFORCE TRAINING / LABOR

- Nearby Brunswick Community College offers Continuing Education and Workforce Development Programs.
- Customized Training Program provides tailored training often at no cost for any logistics/distribution firms.
- Training offered on the job-site, or at the nearby community colleges.
- Ample labor is available in the Wilmington, NC metro area.
- North Carolina is a right-to-work state.

NORTH CAROLINA PORTS

- Central location of the Port of Wilmington offers easy transportation to a larger portion of the southeast and midwest.
- Twelve (12) Miles to Wilmington, NC..
- Offers competitive rates to other ports along the east coast.
- Terminal facilities handle bulk, break-bulk and containerized cargo.
- Ample capacity to support today's cargo volumes.
- Future expansion plans to meet projected growth in international trade.
- The Port of Wilmington has a Foreign Trade Zone and the State can also designate additional FTZ subzones as demand requires.



**Mid-Atlantic
Logistics Center**